



SHRENIK
STEEL CORPORATION

GLASS DOOR HANDLE [H] TYPE



Contact us

🌐 www.shreniksteel.com

✉ shreniksteelco@gmail.com

☎ +91 9687610709

Shrenik Steel Corporation

Committed to building strong client relationships through complete transparency, consistent product quality, secure packaging, and timely delivery all aimed at achieving total customer satisfaction.

We ensure 100% quality assurance and precise order fulfillment across quantities and timelines. From raw material to finished product, our in-house control over the entire manufacturing process allows us to handle orders of any size, at any time. Our goal extends beyond turnover - we strive for complete customer trust and satisfaction.

Why Choose Us??

Our organization has accomplished a significant position across the country by providing excellent quality assortment in numerous specifications at reasonable prices to our patrons.



Premium Quality



Customer Satisfaction



Timely Delivery

1. Premium Quality:

Quality is ensured through strict checks by our QC & A team for complete customer satisfaction.

2. Customer Satisfaction:

We prioritize long-term client relationships by delivering quality, customized products that meet their exact specifications.

3. Timely Delivery

Our skilled warehousing team ensures proper storage and timely delivery while maintaining product quality as per industry standards.

INDEX



Stainless steel **HINGES**



Stainless steel **KNOBS**



Stainless steel **Pull HANDLES**



Stainless steel **MORTICE HANDLES**



Stainless steel **GLASS PATCH** fittings



Stainless steel **DOOR CLOSER**

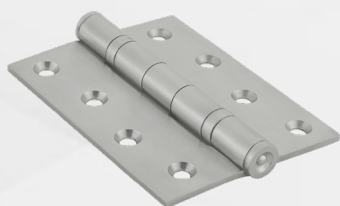
Stainless steel HINGES



BUTTON

Stainless Still Bearing Hinges / j - 4 Grade

Finish	Satin (2 Ball Bearing)
Size	3" x 2.5" x 2.5 mm
	4" x 3" x 2.5 mm
	4" x 3" x 3.0 mm
	4" x 3.5" x 3.0 mm
	5" x 3" x 2.5 mm
	5" x 3" x 3.0mm
	5" x 3.5" x 3.0 mm
	5" x 4" x 3.0 mm



Stainless Still Bearing Hinges / 304 Gra

Finish	Satin (2 Ball Bearing)
Size	3" x 2.5" x 2.5 mm
	4" x 3" x 2.5 mm
	4" x 3" x 3.0 mm
	4" x 3.5" x 3.0 mm
	5" x 3" x 2.5 mm
	5" x 3" x 3.0mm
	5" x 3.5" x 3.0 mm
	5" x 4" x 3.0 mm



Stainless Still Bearing Hinges / j - 4 & 304 Grade

Finish	Satin
Size	4" x 1.1/4" x 2.5 mm
	4" x 1.1/4" x 3.0 mm
	5" x 1.1/4" x 2.5 mm
	5" x 1.1/4" x 3.0 mm
	3" x 1/2" x 3/4" x 1.5 mm
	3" x 1/2" x 3/4" x 2.0mm
	3" x 1/2" x 1" x 1.5 mm
	3" x 3/4" x 1 x 1.5 mm
	4" x 1/2" x 3/4" x 1.5 mm

Stainless steel HINGES

Stainless Still Bearing Hinges / j - 4 & 304 Grade

Finish

Satin

Size

3" x 3/4" x 1.5 mm

3" x 3/4" x 2.0 mm

4" x 3/4" x 1.5 mm

4" x 1" x 2.0 mm

4" x 1" x 2.5 mm

Stainless Still Bearing Hinges / 304 Gra

Finish

Satin

Size

75 X 10 X 6 mm x 1.5mm

75 X 10 X 12 mm x 1.5mm

75 X 10 X 18 mm x 1.5mm

75 X 10 X 25 mm x 1.5mm

75 X 12 X 6 mm x 1.5mm

75 X 12 X 12 mm x 1.5mm

75 X 12 X 18 mm x 1.5mm

75 X 12 X 25 mm x 1.5mm

75 X 18 X 6 mm x 1.5mm

75 X 18 X 12 mm x 1.5mm

75 X 18 X 18 mm x 1.5mm

75 X 18 X 25 mm x 1.5mm

Stainless Still Bearing Hinges / j - 4 & 304 Grade

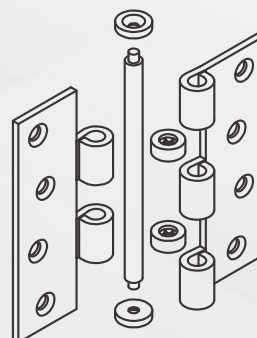
Finish

Satin

Size

Fix

SINGLE PIN
RIVETING



Stainless steel KNOBS



Ick - 101

Finish

Satin

Size

19 mm



Ick - 102

Finish

Satin

Size

25 mm



Ick - 103

Finish

Satin

Size

19 mm



Ick - 104

Finish

Satin

Size

19 mm



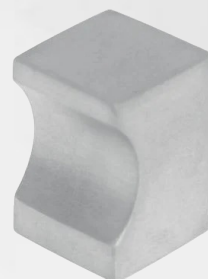
Ick - 105

Finish

Satin

Size

25 mm



Ick - 106

Finish

Satin

Size

19 mm



Ick - 107

Finish

Satin

Size

19 mm



Ick - 108

Finish

Satin

Size

25 mm



Ick - 109

Finish

Satin

Size

19 mm

Stainless steel PULL HANDLES



Iph - 11

Finish	Satin, Combination
Diameter(mm)	19 22 25 32
Size	150 200 250 300 450 600 900 1200



Iph - 22

Finish	Satin
Diameter(mm)	22
Size	200 250 300 350 400 450



Iph - 44

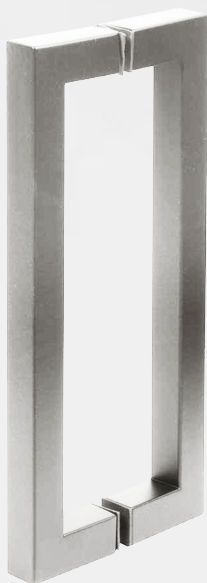
Finish	Satin, Combination
Diameter(mm)	22 25 32
Size	150 200 250 300 350 400 450 600 750 900 1200



Iph - 55

Finish	Satin
Diameter(mm)	15 x 30
Size	300 350 400 450 60 900 1200

Stainless steel PULL HANDLES



Iph - 222

Finish	Satin
Diameter(mm)	19 25
Size	200 250 300 400 450 600 900



Iph - 333

Finish	Combination
Diameter(mm)	19
Size	200 250 300



Iph - 444

Finish	Satin
Diameter(mm)	170 x 170x 1.5 mm
Size	Fix



IGR

Finish	Satin
Diameter(mm)	22
Size	150 200 250 300 350 400 450 600

Stainless steel MORTICE HANDLES



IMH - 1 (Rose Type)

Finish	Combination
Diameter(mm)	19

IMH - 1P (Plate Type)

Finish	Combination
Diameter(mm)	19

IMH - 3 (Rose Type)

Finish	Combination
Diameter(mm)	19

IMH - 1P (Plate Type)

Finish	Combination
Diameter(mm)	19



IMH - 11 (Rose Type)

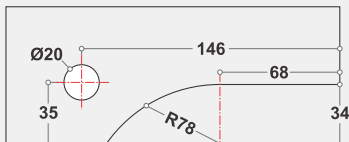
Finish	Satin, Glossy
Diameter(mm)	Solid

IMH - 1P (Plate Type)

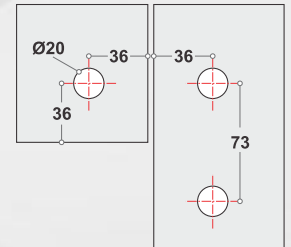
Finish	Satin
Diameter(mm)	Solid



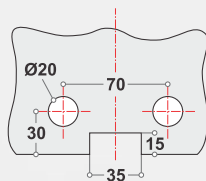
Stainless steel GLASS PATCH FITTINGS



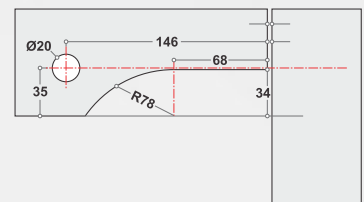
IPF - 3



IPF - 4



IPF - 5



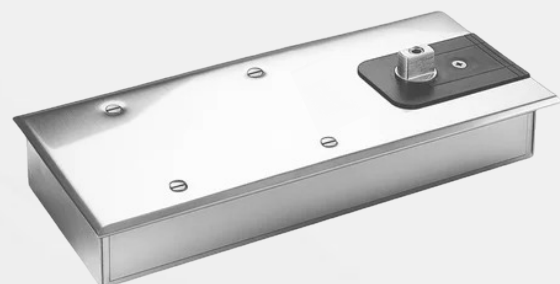
IPF - 7



IFS - 150

Floor Spring (Double Cylinder/Spring) Technical Details

- About 100000 cycle tested
- maximum door width 1200mm
- maximum door weight 150kgs
- non hold open for pool gates
- Cement box size in mm (L x W x H) 306 x 108 x 40
- Adjustment in cement box in mm (L x W x H) 10 x 5 x 5



IFS - 100

Floor Spring (Double Cylinder/Spring) Technical Details

- About 100000 cycle tested
- maximum door width 1000mm
- maximum door weight 100kgs
- non hold open for pool gates
- Cement box size in mm (L x W x H) 275 x 108 x 40
- Adjustment in cement box in mm (L x W x H) 12 x 8 x 8

DOOR CLOSER



IDC - 01

Finish	Silver
Capacity	60Kg.
Material	Aluminium Body

IDC - 02

Finish	Silver
Capacity	65Kg.
Material	Aluminium Body

IDC - 03

Finish	Silver
Capacity	75Kg.
Material	Aluminium Body

Technical Details

- Applicable for wooden doors and the glass doors of metal frame and wooden frame.
- Maximum 500000 cycles tested without damage or maximum 1 year guarantee.
- Single way opening with smoothly movement, hold - open optional.
- Closing speed and latching speed adjustable, BC or DA function optional.
- High quality aluminium body with silver painting.
- Different installation methods to make different closing power sizes.
- Hydraulic machine oil and sealed rings, keep perfect working in cold temperature.
- the closer is universal for right hand & left hand door.



Conference Table (304 Grade)

Finish	Satin
Size	Universal



CSK Phillips Screw (304 Grade)

Material	Stainless Steel
Size	Standard



S H R E N I K

Steel Corporation

Get In Touch



4, S.P.F. Mill Estate, Gujarat Bottlin Road,
Nr. Kewal Kanta, Rakhial, Ahmedabad – 380023,
Gujarat, India